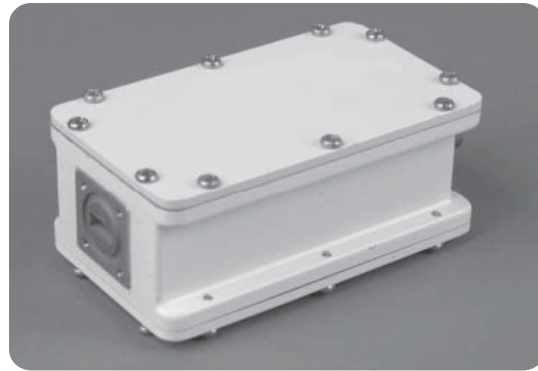




LNB

KA-BAND EXT. REF

9000X



TYPICAL SPECIFICATIONS

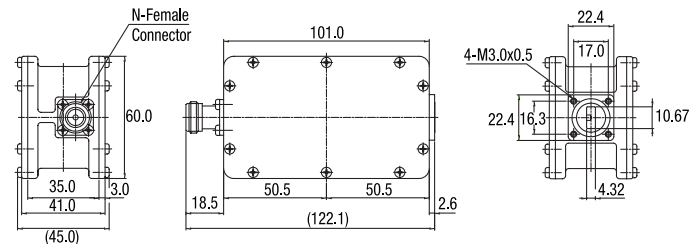
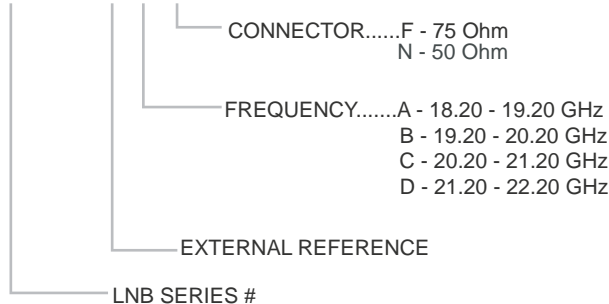
Noise figure	1.4 dB	Conversion gain	56 dB
L.O. stability	Phase Locked to External Reference	Output P1dB	5 dBm
Phase noise (SSB)	-65 dBc/Hz at 1kHz -75 dBc/Hz at 10kHz -95 dBc/Hz at 100kHz -100 dBc/Hz at 1MHz	Power requirements	+15 to +24 V supplied through center conductor of IF cable
Input VSWR	2.2 : 1	Current drain	300 mA
Output VSWR	2.0 : 1	Input Waveguide	WR42
		Dimensions	122 (L) x 60 (W) x 45 (H) mm (4.8 x 2.4 x 1.8 in)
		Weight	400g / 14.1 oz
		Ext Ref Frequency	10 MHz (sine-wave), -10 to 0 dBm
		Temperature Range	-40°C to +60°C

FREQUENCY BANDS AVAILABLE

Typical service	9000XA	9000XB	9000XC	9000XD (*special order)
Input frequency (GHz)	18.20 to 19.20	19.20 to 20.20	20.20 to 21.20	21.20 to 22.20
L.O. frequency (GHz)	17.25	18.25	19.25	20.25
Output frequency (MHz)	950 to 1950	950 to 1950	950 to 1950	950 to 1950

HOW TO ORDER KA-BAND 9000X

9000XAN



MECHANICAL DIAGRAM